



GAT MONTHLY MEMBERSHIP PROGRESS REPORT

Results as of: 3/31/2023

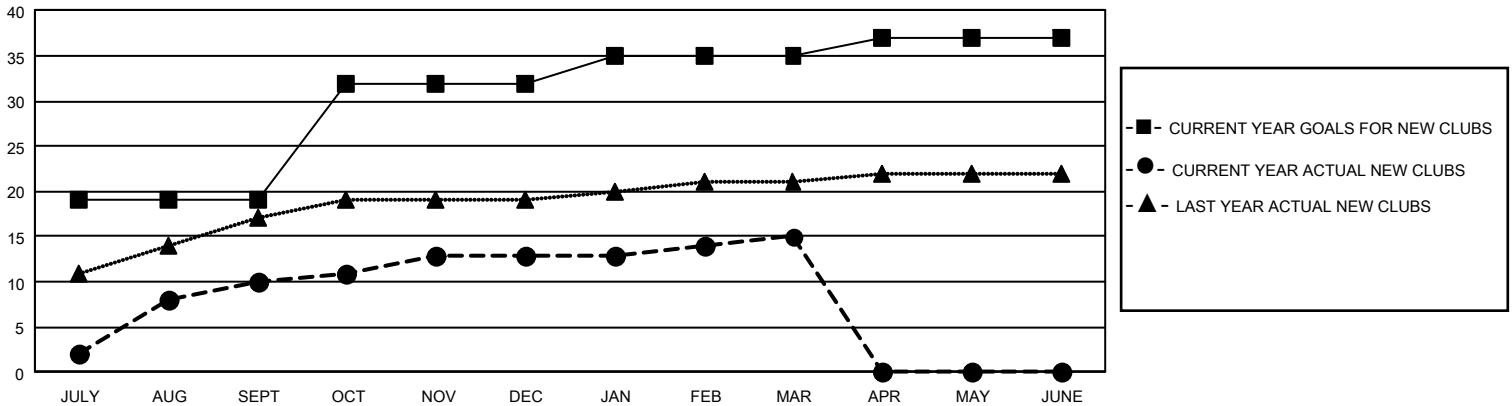
GAT Constitutional Area 5 - MD 300 Taiwan

REPORT DOES NOT INCLUDE CLUBS IN UNDISTRICTED AREAS.

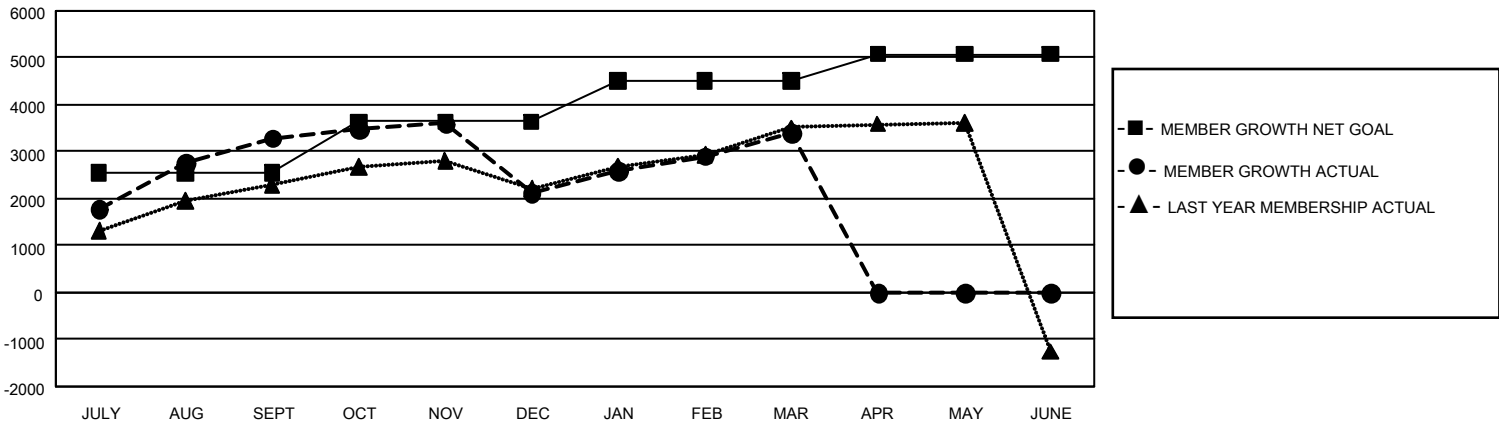
Clubs			
RESULTS FOR 2022-2023			
QUARTER	NEW CLUB GOAL	NEW CLUBS	DROPPED CLUBS
JULY/AUG/SEPT	57	10	8
OCT/NOV/DEC	39	3	4
JAN/FEB/MAR	9	2	4
APR/MAY/JUNE	6	0	0

Members			
RESULTS FOR 2022-2023			
QUARTER	MEMBER GROWTH NET GOAL	MEMBER GROWTH ACTUAL	DROPPED MEMBERS ACTUAL (including transfers)
JULY/AUG/SEPT	2540	4,533	896
OCT/NOV/DEC	1100	826	1,853
JAN/FEB/MAR	864	1,654	213
APR/MAY/JUNE	573	0	0

GOALS AND ACTUAL NEW CLUBS CUMULATIVE



GOALS AND ACTUAL MEMBERS CUMULATIVE



DROPPED CLUBS: 16	
DROPPED MEMBERS	
DECEASED	84
CLUB CANCELLED	18
OTHER	2,860
TOTAL	2,962

968 CLUBS OF 1,116 ADDED 1 OR MORE NEW MEMBERS

[CLICK HERE FOR CUMULATIVE MEMBERSHIP DATA](#)

GENDER DISTRIBUTION	
MALE	27,815 (65.93%)
FEMALE	14,360 (34.04%)
NON BINARY	0 (0.00%)
PREFER NOT TO ANSWER	14 (0.03%)
TOTAL FAMILY UNIT MEMBERS	7,408
FAMILY MEMBERS PAYING HALF DUES	4,502